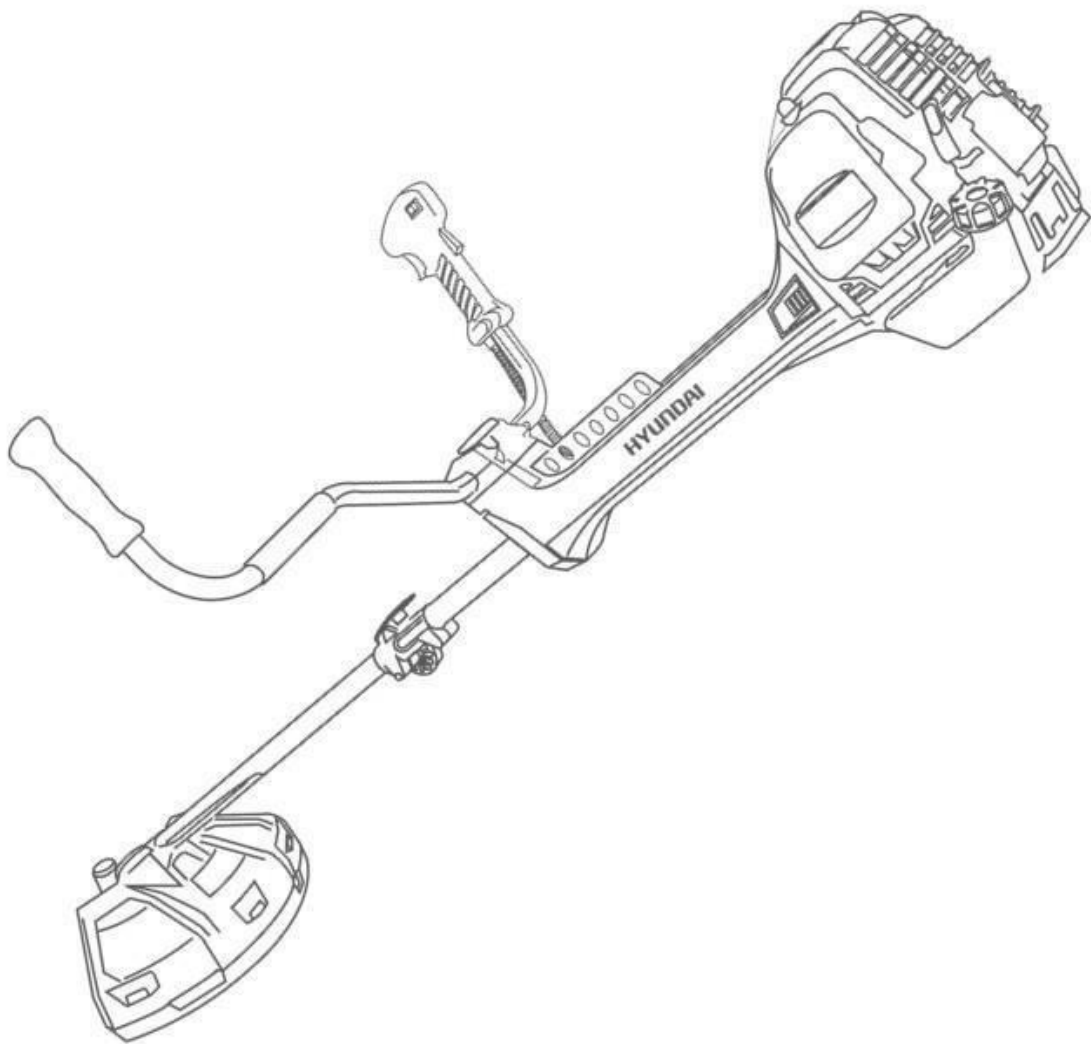


HYUNDAI

BRUSHCUTTER

MODEL HYBC5080AV



User Manual

Licensed by Hyundai Corporation, Korea

TABLE of CONTENTS

1. SAFETY	4 – 8
2. SPECIFICATION	9
3. COMPONENT LOCATIONS	10
4. ASSEMBLY	11 - 16
5. FUEL	17
6. STARTING/STOPPING & USING MACHINE	18 - 21
7. MAINTENANCE	22 - 24
8. STORING THE MACHINE	24
9. TROUBLESHOOTING	25
10. DISPOSAL OF MACHINE	27
11. CERTIFICATE OF CONFORMITY	27
12. CONTACT DETAILS	28



1. SAFETY

1.1 The operator of the machine is responsible for and has a duty of care in making sure that the machine is operated safely and in accordance with the instructions in this user manual. Please note the following safety points.

1.2 The machine should never be left in a condition which would allow an untrained or unauthorised person/s to operate this machine.

1.2.1 All due care and diligence should be taken by the operator for the safety of and with regard to those around whilst using the machine.

1.2.2 Some or all of the following PPE, Warning Signs and symbols may appear throughout this manual and you must adhere to their warning/s. Failure to do so may result in personal injury.

Personal Protective Equipment (PPE)

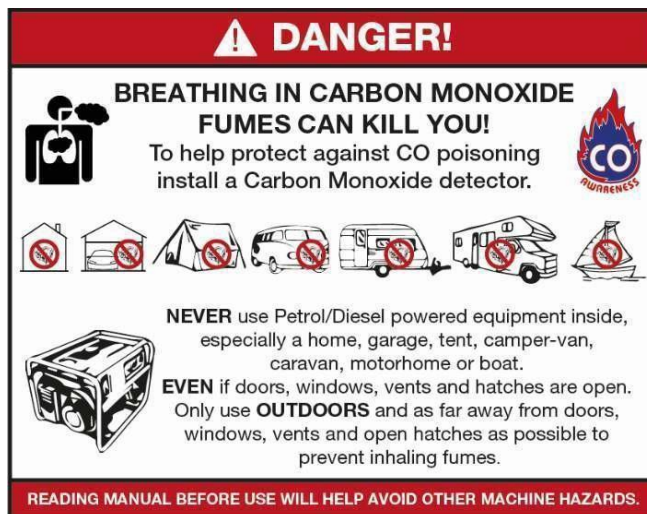


Warning Signs and Symbols instructions on machine – FOLLOW safety messages to avoid or reduce risk of injury or death.				
DANGER DANGER - indicates a hazard, which, if not avoided, could result in serious injury or death.	WARNING WARNING - indicates a hazard, which, if not avoided, could result in serious injury or death.	CAUTION CAUTION - indicates a hazard which, if not avoided, might result in minor or moderate injury.	NOTE NOTE - indicates a situation that could easily result in equipment damage.	 READMANUAL
Read and understand these instructions before use.	Helmet, goggles and ear protection.	Wear anti-slip safety footwear.		
Wear safety gloves.	Beware of thrown objects.	Warning/Attention		
15m (50ft)	Keep all children, bystanders and helpers 15 meters from the machine.	Top speed of rotation (grasstrimmer): 7600 MIN ⁻¹	Top speed of rotation (grasstrimmer): 7600 MIN ⁻¹	
Guaranteed sound.	Warning against flying objects helmet, goggles and ear protection.	No smoking and no naked flames.	Warning: Danger from hot components	Warning: Exhaust from this product contains chemicals that lead to cancer, birth defects and further damage.

1.3 Carbon monoxide




- 1.3.1 Carbon monoxide is a colourless and odourless gas. Inhaling this gas can cause death as well as serious long term health problems such as brain damage.
- 1.3.2 The symptoms of carbon monoxide poisoning can include but not limited to the following;
 - 1.3.2.1 Headaches, dizziness, nausea, breathlessness, collapsing or loss of consciousness.
 - 1.3.2.2 Carbon monoxide symptoms are similar to flu, food poisoning, viral infections and simply tiredness. It is quite common for people to mistake this very dangerous poisoning for something else.
- 1.3.3 To avoid carbon monoxide poisoning **DO NOT** use Petrol/Diesel powered equipment inside a home, garage, tent, camper van, mobile home, caravan or boat. The list is not exhaustive if you are in any doubt contact your dealer.
- 1.3.4 If you think you or someone around you has been affected by carbon monoxide poisoning;
 - 1.3.4.1 Get fresh air immediately, by opening doors and windows, turning off the machine and leaving the affected area.
 - 1.3.4.2 See your doctor immediately or go to hospital - let them know that you suspect carbon monoxide poisoning.
- 1.3.5 **DO NOT** use in an enclosed area or a moving vehicle.



1.4 General fuel safety.



- 1.4.1 Fuel Safety additional information can be obtained from the Health and Safety Executive.
- 1.4.2  **CAUTION** All fuels are flammable.
- 1.4.3 Keep away from all ignition sources i.e. heaters, lamps, sparks from grinding or welding.

- 1.4.4 Hot work on tanks that have contained fuel is extremely dangerous and should not be carried out.
- 1.4.5 Keep work area clean and tidy.
- 1.4.6 Clean up all spills promptly using correct methods i.e. absorbent granules and a lidded bin.
- 1.4.7 Dispose of waste fuels correctly.



TOXIC FUMES

1.5 Petrol safety.

- 1.5.1 Always fuel and defuel in well-ventilated area.
- 1.5.2 Always wear correct, suitable and fit for purpose Personal Protective Equipment (PPE), suggested items are as follows, but are not limited too.



- 1.5.3
- 1.5.4 Respiratory protective equipment should be used when in an unventilated area.
- 1.5.5 When defueling always use a propriety fuel retriever.
- 1.5.6 Always carry fuel in the correct and clearly marked container.

1.6 Vibrations.

- 1.6.1 Prolonged use of the machine sets the user from vibrations, which can lead to white finger (Raynaud's phenomenon) or carpal tunnel syndrome. This condition reduces the ability of the hand to feel and regulate temperature, causing numbness and heat sensations and may cause nerve damage and circulatory tissue death.
- 1.6.2 Not all factors that lead to white finger disease are known, but cold weather, smoking and other diseases that affect blood vessels and blood circulation as well as large and long-lasting impact of shocks are considered factors called in the formation of white finger. Note the following to reduce the risk the white finger and carpal tunnel syndrome to reduce:
 - 1.6.2.1 Wear gloves and keep your hands warm
 - 1.6.2.2 Take regular breaks
- 1.6.3 All of the above precautions can reduce the risk of white finger disease but not rule out carpal tunnel syndrome. Long-term and regular users are therefore recommended to observe the condition of your hands and fingers. Seek medical attention immediately if any of the above symptoms should occur.

1.7 Noise.

- 1.7.1 The operating noise of the machine can damage your hearing. Wear hearing protection such as earplugs or ear defenders to protect your hearing. Long-term and regular users are advised to have hearing checked regularly. Be especially vigilant and cautious when wearing hearing protection because your ability to hear shouted and alarm warnings will be reduced.

- 1.7.2 Noise emissions for this equipment is unavoidable. Carry out noisy work at approved times and for certain periods. Limit the working time to a minimum. For your personal protection and protection of people working nearby it is advisable for them to wear hearing protection.

1.8 Additional safety guidelines.

- 1.8.1 This machine may only be used for trimming grass, weeds and brushwood. Never use for other purposes, as this may result in serious injury! Safety instructions must be observed. **DO NOT EXPOSE YOURSELF OR OTHERS TO THE RISKS.** Follow these general instructions:
- 1.8.1.1 Always wear safety goggles for eye protection. Long hair must be tied back. Do not wear loose clothing or jewelry that could get caught in moving parts of the machine. Safe, strong, non-slip safety shoes should be worn. It is recommended that the legs and feet are fully protected, to protect themselves during the operation against flying objects.
 - 1.8.1.2 Check the entire machine for loose/missing parts (nuts, bolts, screws, etc.). Tighten/replace before using the machine. Do not use accessories with this machine other than those recommended/supplied by the manufacturer. Otherwise serious injuries to the user or bystanders as well as damage to the machine will result.
 - 1.8.1.3 Keep the handles free of oil and fuel.
 - 1.8.1.4 Always use the correct interface handles and shoulder strap.
 - 1.8.1.5 Do not smoke when mixing fuel or when filling the tank.
 - 1.8.1.6 Do not mix fuel in an enclosed area or near open fires. Ensure sufficient ventilation / ventilation.
 - 1.8.1.7 Mix and store the fuel mixture in a correctly marked container, which is allowed by local regulations for such use.
 - 1.8.1.8 Never remove the fuel tank cap while the engine is running.
 - 1.8.1.9 Do not operate the machine in enclosed spaces or buildings. Exhaust gases contain harmful carbon monoxide.
 - 1.8.1.10 Do not run and whilst using the machine. When making machine adjustments turn it off and place the machine always on a flat clear surface.
 - 1.8.1.11 Do not use the machine if it is damaged. Never remove safety devices of the machine. Otherwise it may result in serious injury to the operator or the spectator, and damage to the machine will result.
 - 1.8.1.12 Check the area to be cut, and remove any residue that may be involved in the nylon cutting head or blade. Remove all possible items that could fling around when the engine works.
 - 1.8.1.13 Never leave the machine unattended.
 - 1.8.1.14 Do not bend over far forward. Maintain proper footing and balance Do not use the machine while standing on a ladder or on any other unstable surface.
 - 1.8.1.15 Children must not have access to the machine.
 - 1.8.1.16 Spectators should be kept at a safe distance from the work area, and at least 15 meters.

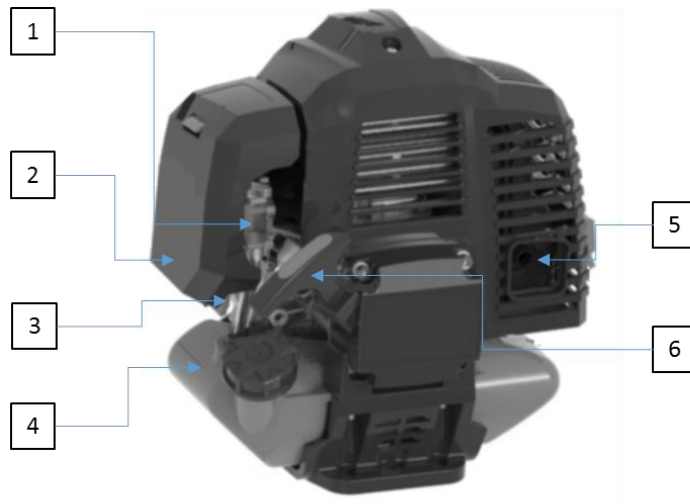
- 1.8.1.17 Keep hands and feet away from the nylon cutting head or metal blade during operation.
- 1.8.1.18 Do not use the machine if you are tired, ill or under the influence of medication, drugs or alcohol.
- 1.8.1.19 Only use an undamaged nylon cutting head. If you strike a rock or other obstacle, stop the engine and check the cutting head. A defective or un-balanced cutting head must never be used.
- 1.8.1.20 Before starting, after the failure or impact, make sure to check the machine and make sure that it is in good condition.
- 1.8.1.21 Observe local regulations which may restrict the use of the machine.
- 1.8.1.22 Only use device with the cutting tool still in good condition.
- 1.8.1.23 Improper maintenance, or the use of non-compliant spare parts or removal or modification of the safety devices can result in damage to the unit and serious injury of so working person.
- 1.8.1.24 Secure unit during transport well to prevent loss of fuel, damage to the unit and injury. Always install the protective part of the cutting blade before transporting or storing the machine.
- 1.8.1.25 On machines with a clutch, you should check regularly that the cutting accessory stops rotating when the engine is idling.
- 1.8.1.26 Check the machine before each use for loose fasteners, fuel leaks, etc. Replace damaged parts damaged parts before use.
- 1.8.1.27 It is also necessary to have sufficient breaks and to change your working position.
- 1.8.1.28 Do not store the machine in a closed area where fuel vapors as may reach an open flame from hot water heaters, ovens, etc. Store the machine only in a well-ventilated area.
- 1.8.1.29 **IMPORTANT:** When filling with, make sure the engine is off and cooled. Never refuel if the machine is running or is hot. If fuel is spilled, wipe on this before you start the engine.

2. SPECIFICATION

Type	HYBC5080AV
Engine	Air cooled two stroke
Displacement – cc	50.8 cc
Maximum output power – kw/rpm	1.56/7500 min ⁻¹
Maximum motor speed – rpm	8500 min ⁻¹
Idle motor speed – rpm	3000 ±300 min ⁻¹
Maximum spindle speed grass trimmer – rpm	7600 min ⁻¹
Maximum spindle speed brush cutter - rpm	7200 min ⁻¹
Sound level LPA at operators position - dB(A)/K factor dB	98.61/3dB
Measured sound power level LWA - dB(A)/K factor dB	113.99/3dB
Measured sound power LWA level - dB(A)	117
Maximum vibration values on each handle - (left/right hand) m/s ² /K factor m/s ²	9.185 (L)/6.736 (R)/1.5
Maximum diameter of the thread – mm	Φ440/Φ2.5mm
Diameter of the metal blade – mm/n ^o teeth	255 x 1.6/3.
Handle pieces	2
Direction of cutting device	Clockwise
Dry weight (without fuel, cutting set & strap) - kg	9.68
Fuel tank capacity – l	0.80
Fuel consumption (kg/h) (in accordance with ISO 8893)	0.87
Specific fuel consumption (g/kWh) (in accordance with ISO 8893)	560.15

3. COMPONENT LOCATIONS

3.1. Engine.



1 - Choke

2 - Air filter cover

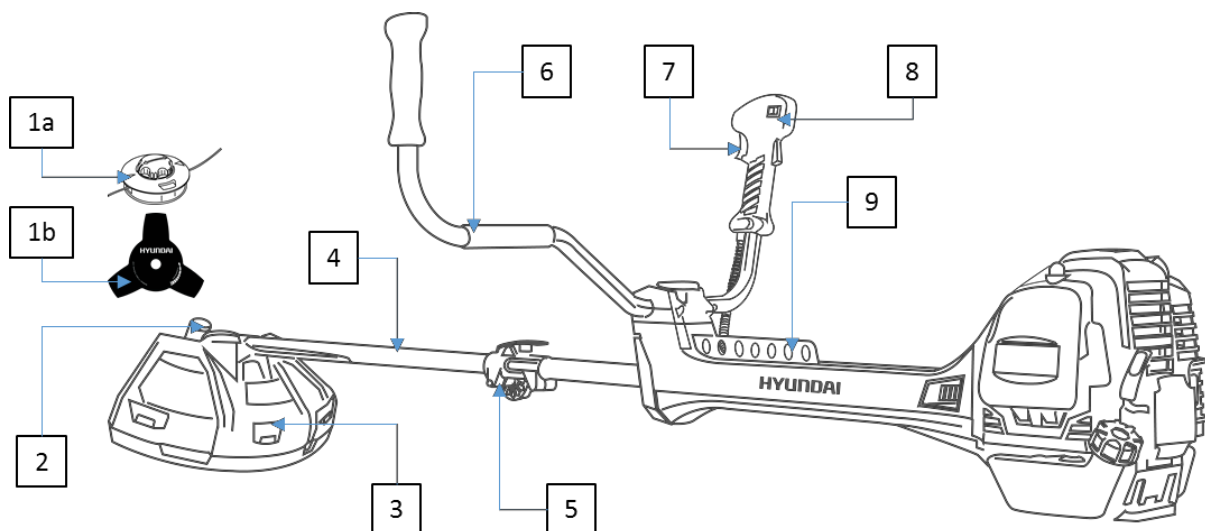
3 - Primer bulb

4 - Fuel tank

5 - Spark arrester/Exhaust

6 - Starter handle

3.2. Machine.



1a - Grass trimmer

1b - Brush cutter

2 - Gear case

3 - Trimmer shield

4 - Drive shaft

5 - Locking screw

6 - Handle

7 - Throttle

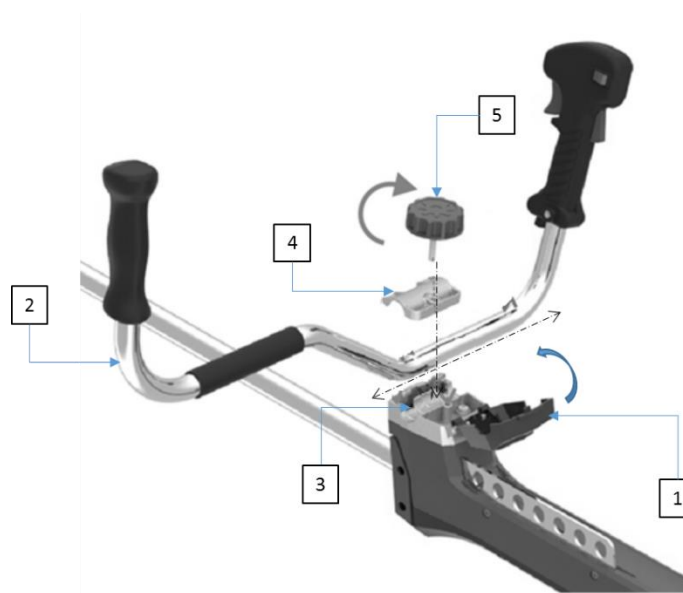
8 - Start/Stop switch

9 - Harness connection

4. ASSEMBLY

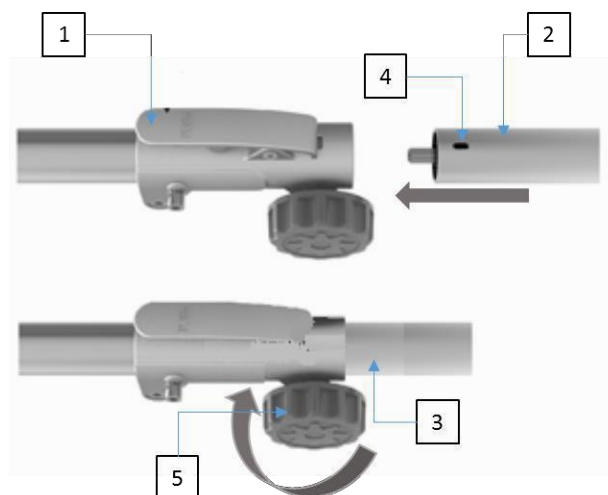
4.1. Mounting of the handle.

- 4.1.1. The handle (2) **MUST** be assembled before use.
- 4.1.2. Lift cover (1)
- 4.1.3. Place the handle (2) into cradle (3), take clamp (4) and place over handle.
- 4.1.4. Using knurled knob (5) screw through clamp (4) and into cradle (3). Once fully tighten replace cover (1).
- 4.1.5. To position handle bar to suit user loosen knurled knob (4) slide handle bar left or right to suit, fully tighten knurled knob (4).



4.2. Mounting drive shaft.

- 4.2.1. Connect the two parts of the drive shaft together.
 - 4.2.1.1. Depress the lever (1) up and move handle (2) towards drive shaft.
 - 4.2.1.2. Locate locking hole (4) and release lever (1).
 - 4.2.1.3. Tighten locking nut (5) in a clockwise direction.



4.2.2. N.B. The drive shaft rod in the lower half is free to move and may come out of the tube. This is not a fault, if it does come out all you need to do is to hold the pole vertical with the head towards the floor re-insert the drive shaft twisting gently to align with the gear.

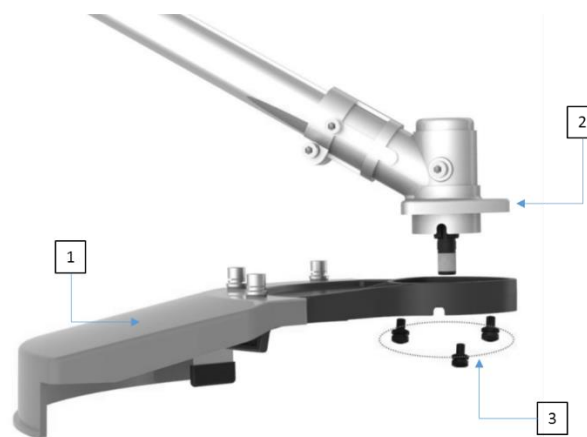
4.3. Installing the trimmer shield.

4.3.1. Take shield (1) and offer it up to the machine (2), pass one of the fixing bolts (3) through one of the holes of the shield (1) then loosely screw it into the machine.

Repeat process for the remaining two fixing and bolts.

4.3.2. Once all three bolts are in place you can tighten them up

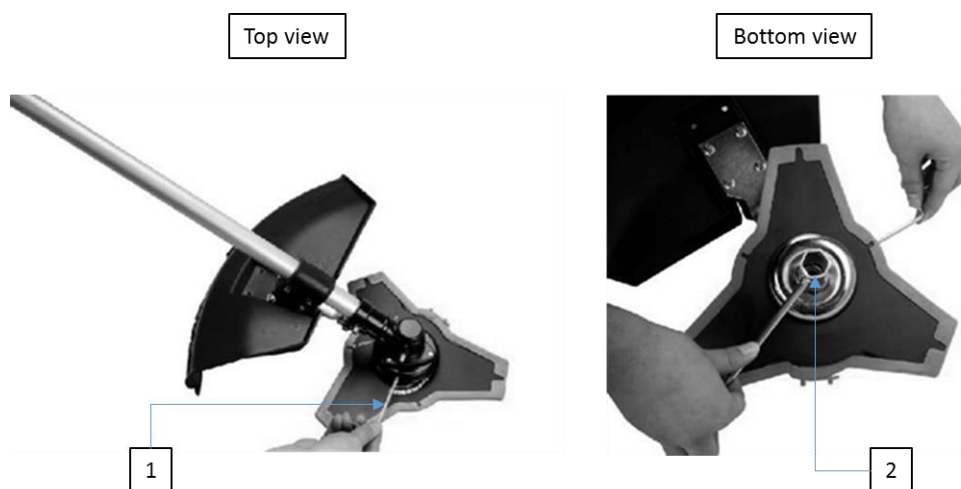
4.3.3. N.B. There are 3 bolts.



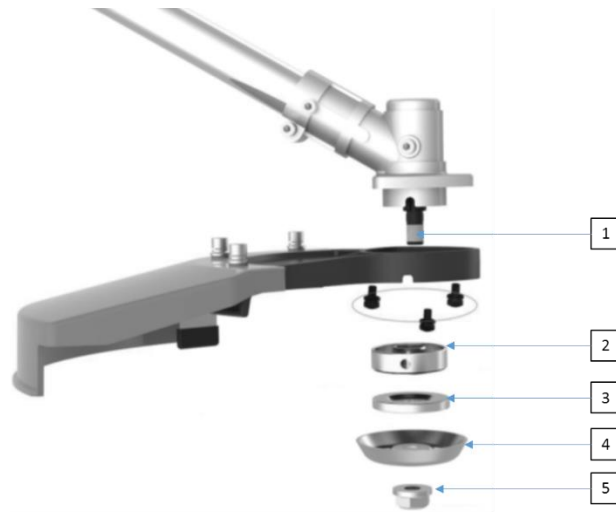
4.4. Mounting the brush cutter blade.

4.4.1. Before mounting the brush cutter blade you will have to disassemble the clamping flange fixings or disassemble the clamping flange fixings.

4.4.2. You will need to lock the shaft using supplied tool (1) rotate shaft until it locks.



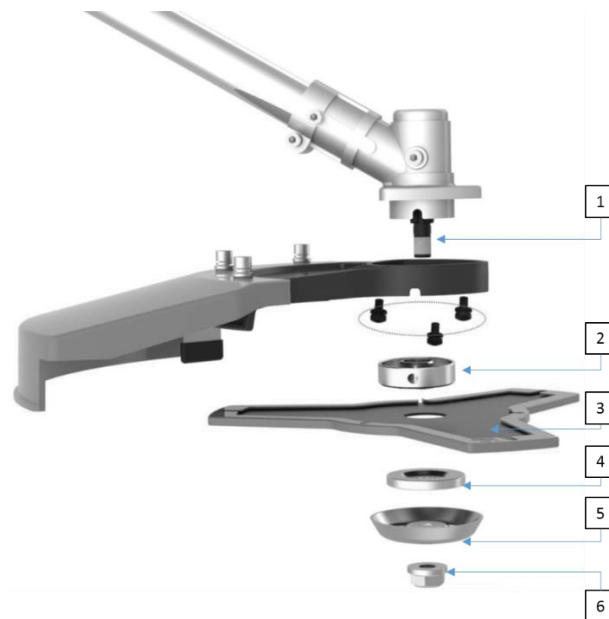
- 4.4.3. Use the supplied box spanner to remove the remove the nut (5) in a clockwise direction then remove cover (4), clamping flange (3) and key piece (2).



- 4.4.4. Once above is complete you can proceed to install the brush cutter blade.

4.4.4.1. Insert key (2) and blade (3) over shaft (1), then clamping flange (4), cover (5) and finally retaining nut (6).

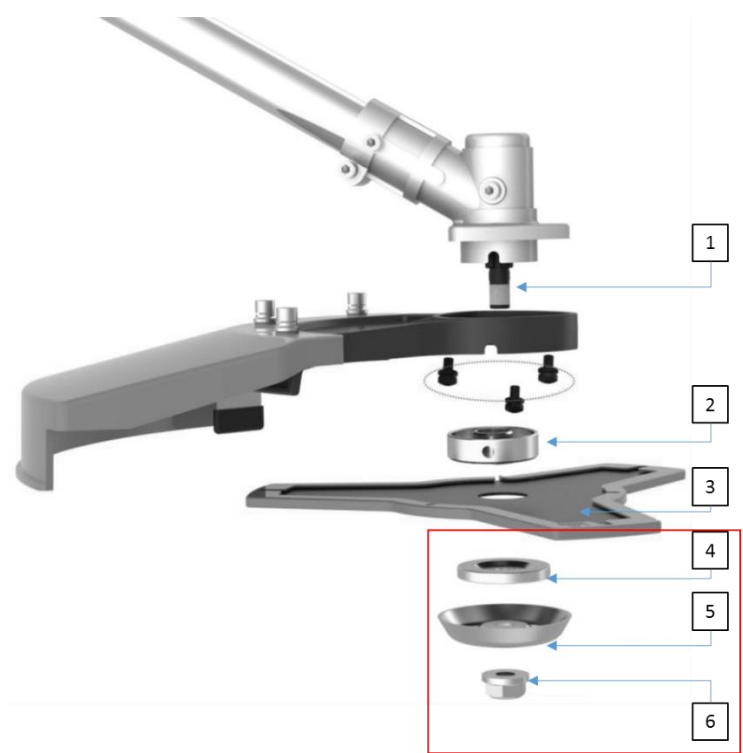
4.4.4.2. Tighten the nut in an anti-clockwise direction making sure that the blade does not spin independently of the shaft.



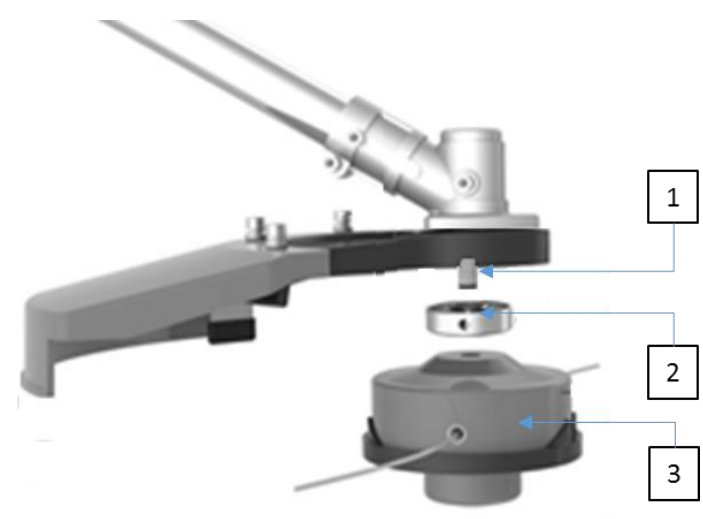
4.5. Mounting the trimmer head.

- 4.5.1. Before mounting the trimmer head you will either have to disassemble the clamping flange fixings and remove the brush cutter blade.

- 4.5.2. As in 4.4.1 to 4.4.3 you will need to lock the shaft and remove the nut, cover, clamping flange (blade if fitted) and key piece.
- 4.5.3. Keep items (4), (5) & (6) in a safe place.



- 4.5.4. Fit spacer (2) over shaft (1), then screw trimmer head(3) onto threaded shaft in a anti-clockwise direction



4.6. Instructions for accessories.

- 4.6.1. Make sure that your product is only equipped with original accessories. Only use machine with original parts which are specified by the manufacturer. The use of any other accessories or accessories may cause injury to the user and damaging the machine.
- 4.6.2. Clean the machine completely, particularly the fuel tank and the air filter.
- 4.6.3. After using the appliance, all fuels should be removed.

- 4.6.4. Spectators should be informed how to arouse the users attention, otherwise it could cause an unsafe situation.
- 4.6.5. Never touch the nylon cutting head or the metal sheet when the machine is running.
- 4.6.6. If it is necessary to replace the guard or the cutting tool, be sure that the machine and the cutting tools have come to a standstill.
- 4.6.7. The machine must be switched off before changing the working area of the machine.
- 4.6.8. If necessary, you can get the machine repaired by an authorized dealer. If the machine is broken, do not continue using machine.
- 4.6.9. When starting or during the operation of the machine, do not touch hot parts such as the exhaust, ignition cables or the spark plug.
- 4.6.10. After the engine is stopped, the exhaust will be hot. Never place the machine in the vicinity of flammable materials (dry grass, combustible gases or flammable liquids, etc.)
- 4.6.11. Pay particular attention to the fact that the operation in the rain or immediately after rain the ground can be slippery.
- 4.6.12. If you slip or fall to the ground, release the throttle lever immediately.
- 4.6.13. Before removing grass tangled in machine, stop the machine and disconnect the spark plug cap. Before adjusting or repairing machine, make sure the engine is stopped and the spark plug is disconnected.
- 4.6.14. Make sure that you do not drop the machine or hit obstacles.
- 4.6.15. When the machine is not going to be used for a long time and is going to be stored, drain fuel from the fuel tank and the carburetor, clean the parts. Put the machine in a safe place and make sure that the machine is completely cooled.
- 4.6.16. Perform regular inspections for the safe and efficient operation of the machine. For complete control, please contact a specialist workshop in conjunction.
- 4.6.17. Keep the machine from fire or sparks.
- 4.6.18. Be careful when using.
- 4.6.19. There is a danger of kickback when using this machine.
 - 4.6.19.1. Use extreme caution when using this machine with the cutting blade. A kickback is a reaction that can occur when the rotating cutting blade strikes an object which cannot be cut. This contact causes the cutting blade to stop for an instant and then suddenly repel from the object taken with accelerated force. This reaction can be violent enough that the operator momentary loses control of the machine. A kickback can occur without warning when the cutter encounters an unseen obstacle when the blade is running. This is more likely in areas where it is difficult to properly check the material/area to be cut. For easy and safe cutting, cut the weeds from right to your left.

4.7. Notes on working with the brush cutter (metal blade).

4.7.1. A metal blade with 3 teeth is delivered with the machine. This is used for cutting of bushes and weeds. **The use of a saw blade with this machine is prohibited.**

⚠ WARNING

4.7.2. Do not cut with blunt, cracked or damaged metal blade. Before starting work, check the area for obstacles such as stones, metal rods or other objects. If these cannot be removed, mark this position, so you can avoid contact with the blade and objects. Overhead power lines can be caught on the blade head if machine is swirled in the air.

⚠ WARNING

4.7.3. Do not use the brush cutter for the cutting of trees.

⚠ WARNING

4.7.4. In addition, you should wear head, eye, face and hearing protection, safety shoes. Do not wear rings and jewelry or loose, dangling clothing that could get caught in the machine. Do not wear footwear with unprotected toes and do not work barefoot or without leg protection. In certain situations, you have to wear head protection.

4.8. Wearing the shoulder harness.

4.8.1. You MUST;

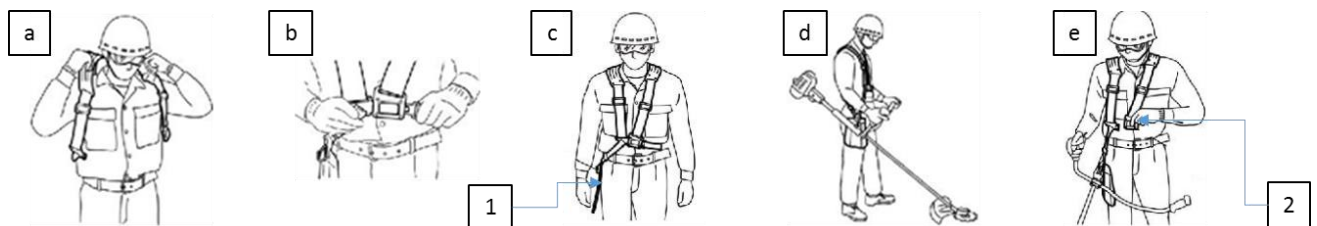
4.8.1.1. Always wear the provided to harness, when you use the machine!

4.8.1.2. Make sure that the machine is securely hooked onto the strap.

4.8.1.2.1. If you do not, you will not be able to control the machine safely.

4.8.1.2.2. This may result in injury to yourself or other people.

4.8.1.3. NEVER use a harness with a defective quick release or other damage.



4.8.2. Fit harness (a) over shoulders making sure that it is not damaged or twisted.

Connect buckle (b) and adjust to suit. Attach the quick release plate (c)(1) and make sure that it functions correctly. Attach machine (d) to quick release plate. To release harness operate the release buckle (e) (2).

5. FUEL

5.1. Fuel and 2 stroke oil.

- 5.1.1. You **MUST** only use fresh unleaded fuel and 2 stroke engine oil mixture. For the **first time ONLY a mixing ratio of 25:1** should be used to lubricate all engine parts to an optimum level. Thereafter the mix is 40:1.

WARNING

- 5.1.3. NEVER use neat petrol in your engine. This will cause permanent engine damage and will invalidate the manufacturer's warranty of this product. NEVER use a fuel mixture that has been stored for 90 days.

5.2. Fuel mixture.

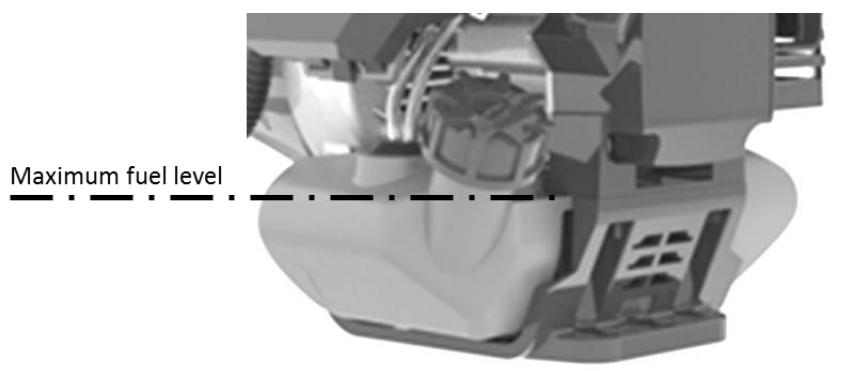
- 5.2.1. Mix unleaded petrol with 2 stroke engine oil into an appropriate container. Observe the mixture table for correct ratio of fuel to oil.

Unleaded petrol	Two-stroke engine oil (40:1)	Unleaded petrol	Two-stroke engine oil (40:1)
1 Litre	0.025 Litre (25ml)	5 Litre	0.125 Litre (125ml)
2 Litre	0.050 Litre (50ml)	10 Litre	0.250 Litre (250ml)

- 5.2.2. Shake the container to ensure complete mixing.

WARNING


- 5.2.3. Petrol is extremely flammable and sparks and naked flames can cause an explosion
5.2.4. Refuel only in a well ventilated area and allow engine to cool before filling.
5.2.5. Smoking and naked flames must be avoided as any sparks during refueling
5.2.6. Do not overfill the tank.




- 5.2.7. Check after refueling if the fuel tank cap is properly closed.
5.2.8. Avoid any spillage of petrol make sure all spillages are cleaned up immediately.
5.2.9. Keep the machine away from children.


6. STARTING/STOPPING & USING THE MACHINE

6.1. Engine - Cold start.

- 6.1.1. Fill the machine with fuel as described in section 5.
- 6.1.2. Turn the power switch (1) to the on position (I).
- 6.1.3. Set the machine on a firm and flat surface.
- 6.1.4. Press the primer bulb (3) about 8-10 times (petrol will flow into bulb).
- 6.1.5. Move the choke lever (2) to the upper (closed) position.
 - 6.1.5.1. 
- 6.1.6. Pull the starter rope (4) with a short stroke out until resistance is felt (about 100mm). Then pull firmly and continuously, do not let go of the starter handle instead let it return slowly.


 **NOTE** Always pull the starter rope straight out. The oblique pulling the starter makes the rope rub against the eyelet. This can lead to fraying or breaking the starter control rope. Always hold the starter handle firmly when the rope is withdrawn. Never let the rope fly back into the starter this could damage the starter.

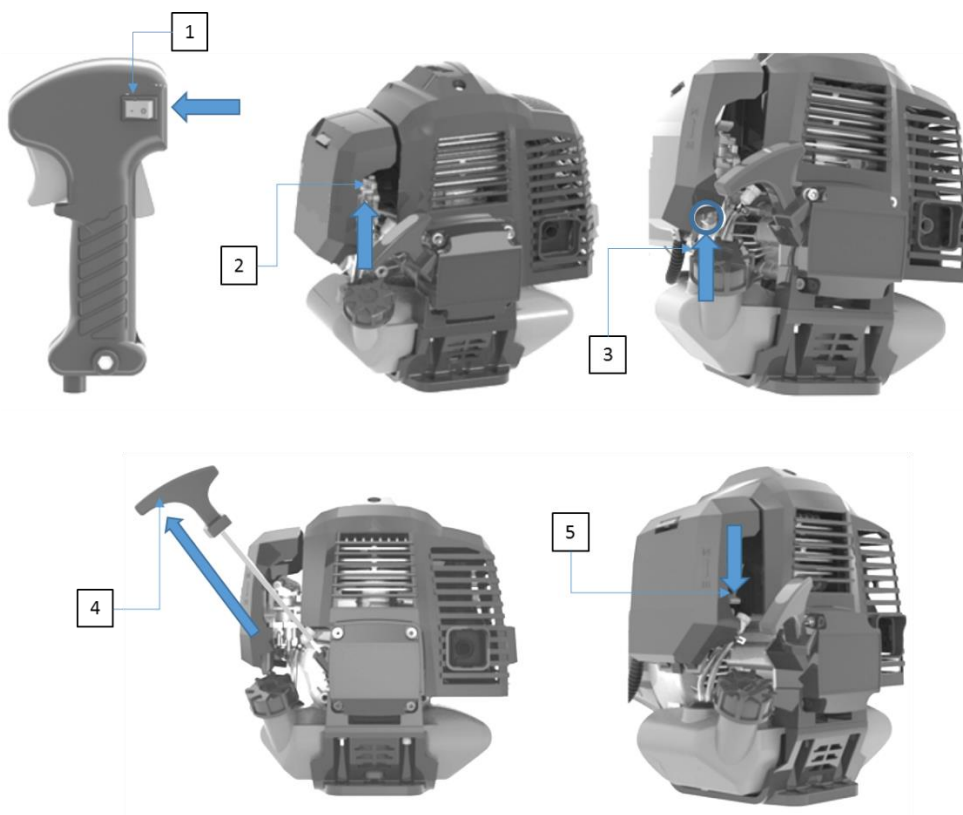
- 6.1.7. Once the machine has started move the choke lever (5) to the lower run (open) position.

6.1.7.1. 


- 6.1.8. Before starting work allow the engine to warm up at idle speed for about ten minutes.

- 6.1.9. Never leave the machine unattended.

 **NOTE** If the engine does not start after repeated attempts, refer to troubleshooting section.



6.2. Engine - Warm start.

- 6.2.1. Fill the machine with fuel as described in section 5.
- 6.2.2. Turn the power switch (1) to the on position (**I**).
- 6.2.3. Set the machine on a firm and flat surface.
- 6.2.4. Move the choke lever (5) to the lower (open) position.
 - 6.2.4.1. 
- 6.2.5. Pull the starter rope (4) with a short stroke out until resistance is felt (about 100mm). Then pull firmly and continuously, do not let go of the starter handle instead let it return slowly.
- 6.2.6. Before starting work allow the engine to warm up at idle speed for about ten minutes.
- 6.2.7. If engine does not start then follow the Engine - Cold start section.
- 6.2.8. Never leave the machine unattended.

6.3. Stopping the machine.

- 6.3.1. Release the throttle lever and let engine idle.
- 6.3.2. Press the start-stop switch on the handle to off position (**O**) and wait until the machine stops.
- 6.3.3. Never leave the machine unattended.

6.4. Trimming techniques.



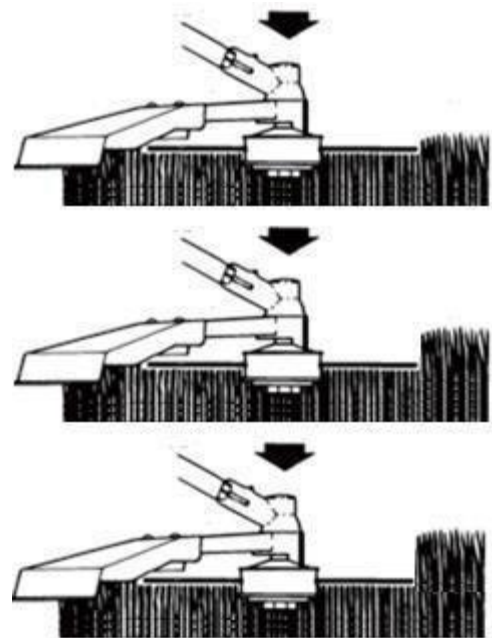
CAUTION

If you are not familiar with the trimming, practice with the machine in the off position(**O**) (switched off), as shown below.



- 6.4.1. Always trim or cut with high engine speeds.
- 6.4.2. Do not run the machine slowly.
- 6.4.3. Swing the nylon cutting head of the trimmer horizontally from one side to the other.
- 6.4.4. Keep cutting deck parallel with the ground. Do not tilt the nylon cutting head during operation.
- 6.4.5. For correct cutting height trim in advance in a test area.
- 6.4.6. Keep nylon cutting head at the same level for even depth of cut.

- 6.4.7. ALWAYS clear the area of cans, bottles, rocks, etc. Flying or whirling objects may cause serious injury and damage to users or viewers. If an object is accidentally flung out from machine, immediately stop and check the machine.
- 6.4.8. Never let the machine run with damaged or defective parts.
- 6.4.9. In trimmer mode only use for trimming grasses.
- 6.4.10. Never raise the nylon cutting head above knee height during operation.
- 6.4.11. DO NOT use the machine on a slope or uneven ground or if there is the chance of slipping or losing the stability,
- 6.4.12. Never over cut instead cut short lengths then lower until desired height is achieved, as shown below.



⚠ CAUTION ALWAYS STOP MACHINE before removing grass deposits to prevent overheating of the drive axle. Grass deposits occur when fibers of the weed are involved around the shaft under the shield. This prevents the shaft from cooling properly. Remove grass deposits with a screwdriver or similar tool only when switched off the machine.

6.5. Trimming round trees.

- 6.5.1. Trim around tree trunks slowly making sure that the nylon cord does not come into contact with the tree trunk.
- 6.5.2. Walk around the tree from left to right, and approach the grass/weeds with the tip of the thread.

6.6. To release more nylon cutting line.

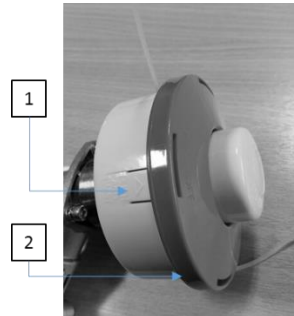
- 6.6.1. To release new nylon line, run the machine at full throttle and tap the nylon cutting head on the grass.



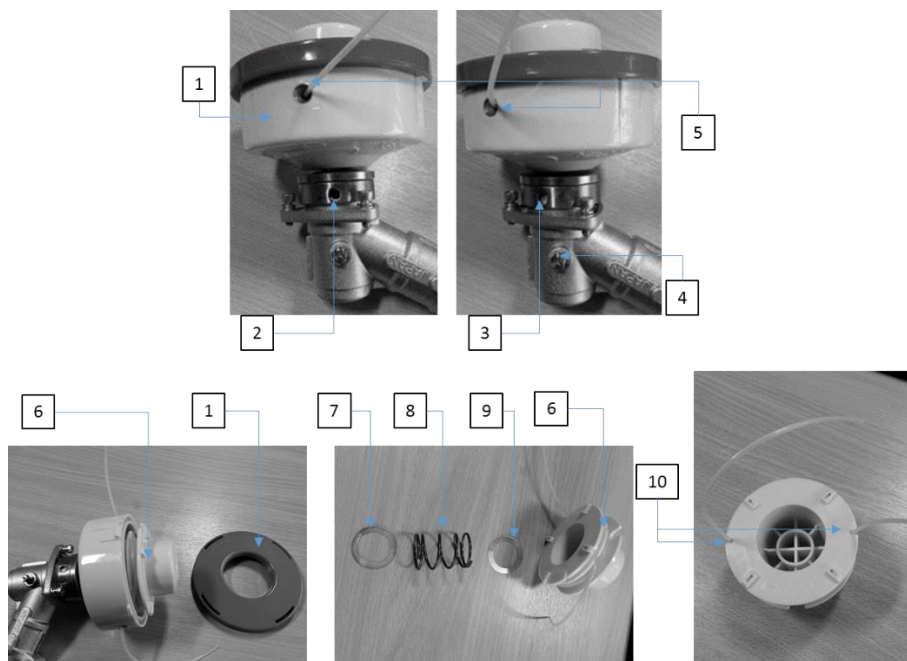
- 6.6.2. The nylon cutting line releases automatically.
 - 6.6.2.1. The knife edge mounted on the shield cuts off excessive line. See section 7.4 on how to sharpen cutting blade.
- 6.6.3. When trimming near brick/stone walls the nylon line will wear out quicker.

6.7. Replacing the nylon cord.

- 6.7.1. Turn off the engine
- 6.7.2. Put the brush cutter on the ground and dismantle the nylon head.
- 6.7.3. Unlock the head by pressing the nylon head unlocking tab (1) and turning locking ring (2) in an clockwise direction.



- 6.7.4. Once unlocked pull the reel (6) from the body (1) Remove the excess thread from reel.
- 6.7.5. Once the reel is removed it will reveal first washer (7), spring (8) and second washer (9), these will need to be inserted in the same order when reassembling.
- 6.7.6. Cut 5 metres of new nylon cord and wrap it clockwise firmly around the reel.
- 6.7.7. After the reel is wrapped push the thread ends into the slots (10) on the reel and then trough the holes in the outer drum (5).
- 6.7.8. Press the inner with the outer coil together and turn them against each other until they snap into place then put the locking ring (1) over the top and turning anti-clockwise lock unit together.



7. MAINTENANCE

7.1. Maintenance schedule.

Component		Maintenance cycle					
		Each use	Every month or 10 hours	Every 3 months or 15 hours	Every 6 months or 50 hours	Every 12 months or 100 hours	Every 24 months or 300 hours
Air filter	Check	○					
	Clean			○ a			
Spark plug	Check/Adjust					○	
	Change						○
Spark plug electrode	Clean					○	
Cooling fins	Check/Clean				○		
Connections – nuts bolts screws etc.	Check and tighten as required	○					
Coupling	Examine				○ b		
Idle	Check/Adjust					○ b	
Valve clearance	Check/Adjust					○ b	
Spark arrester	Check/Clean	Every 300 hours					
Fuel tank	Examine					○	
Fuel pipes	Examine	Each use replace as required					
Bevel gear	Fill	After 25 hours of use (For location of bevel gear grease nipple see picture item 4 page 21)					

a = Increase maintenance intervals if operating in dusty environments.



WARNING

b = All maintenance operations - except those listed in the operating instructions, must be performed by qualified service personnel

7.2. Cleaning the air filter

Never let the engine run without the air filter.

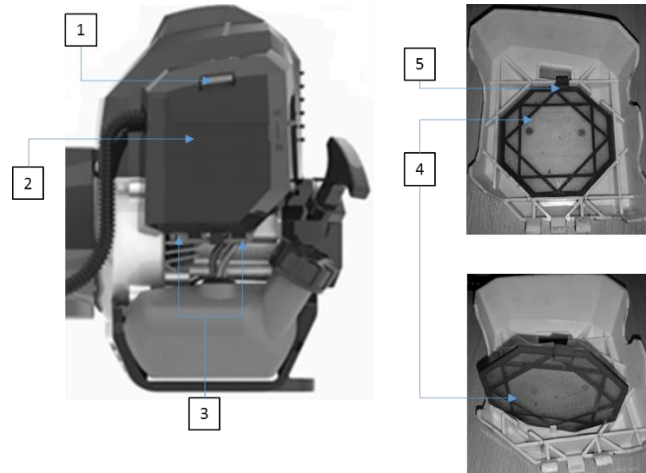


CAUTION

A dirty air filter presses on the engine performance, increases fuel consumption and makes it difficult to start. If you notice a loss of engine power.

- 7.2.1. Push clip (1) down and pull filter cover (2) away from machine, take care to release lower clips (3).

- 7.2.2. Remove the filter (4) by pressing clip (5) and lifting filter clear. Wash with soap and water. Never use petrol or benzene!
- 7.2.3. Allow to dry the filter in the air.
- 7.2.4. To replace the filter reverse the above process.



7.3. Spark plug.

- 7.3.1. To ensure the normal operation of the engine, a spark plug gap of 0.6 -0,7mm must be maintained and be free of carbon deposits.

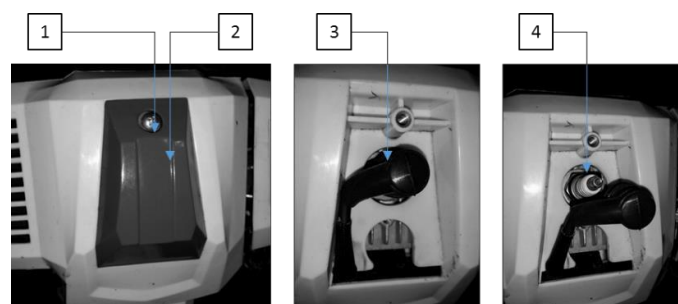
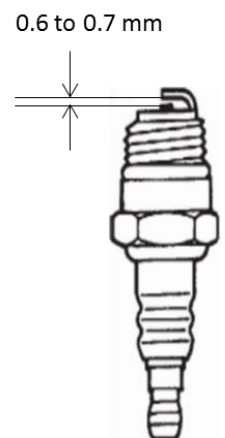


WARNING

The spark plug **MUST** be fully tightened otherwise the engine will overheat causing damage.

Always complete the following steps with the engine off:

- 7.3.2. Undo retaining screw (1) and lift spark plug cover (2) clear.
- 7.3.3. Disconnect the spark plug cap (3) carefully. Do not pull on the HT lead instead pull on the spark plug cap (3).
- 7.3.4. Using the supplied spark plug wrench unscrew the spark plug (4) in an anti-clockwise direction.
- 7.3.5. Check the spark plug (4) visually for damage and electrode consumption, remove the carbon deposits.
- 7.3.6. Check the gap with a feeler gauge and turn the electrode on the right distance of 0.6 to 0.7mm.
- 7.3.7. Check the washer of the spark plug (4) and turn the spark plug with a torque 12-15 Nm.
- 7.3.8. Refit the spark plug cap onto the spark plug.



7.4. Trimmer blade sharpening.

⚠ WARNING When sharpening the blade wear safety to help avoid injury.

- 7.4.1. Remove the cutting blade (2) from the shield (1).
- 7.4.2. Put cutting blade securely into a vice.
- 7.4.3. Sharpen the blade with a suitable flat file.
- 7.4.4. Please make sure that you maintain the angle of cutting.
- 7.4.5. Maintain the original cutting angle.



8. STORING THE MACHINE

⚠ WARNING If you do not follow these steps, deposit may arise in the carburetor. This will cause starting difficulties and may cause permanent damage

- 8.1. Perform all the general maintenance that the maintenance section of your 'User Manual' is recommended.
- 8.2. Clean the outside of the machine, drive axle, shield and nylon cutting head.
- 8.3. Remove all fuel from the fuel tank.
- 8.4. After all the fuel is drained, start the engine.
- 8.5. Allow the engine to run in idle until engine stops alone. This allows the fuel to be removed from the carburetor.
- 8.6. Allow engine to cool down (about 5 minutes).
- 8.7. Use a spark plug wrench, remove the spark plug.
- 8.8. Pour 1 teaspoon of clean 2-cycle oil into the combustion chamber. Slowly pull the starter rope several times to coat internal components. Replace the spark plug.
- 8.9. Store the machine in a cool, dry place away from any source of ignition such as an oil burner, water heater etc.
- 8.10. Transporting the machine.
 - 8.10.1. When transporting the machine make sure that no fuel is allowed to leak out.
 - 8.10.2. DO NOT allow the trimmer/brush cutter come into contact with persons, animals and property.

9. TROUBLESHOOTING



CAUTION

If troubleshooting does not solve the problem, contact your dealer or the manufacturer directly. Use only original parts approved by the manufacturer, otherwise a hazard risk arises.

9.1 Difficulties in starting.

Situation		Cause	Solution
No spark	Spark plug	Carbon deposit between electrodes of the spark plug	Clean the spark plug. Adjust the gap to 0.6 ~ 0.7mm, Replace the spark plug
	Other	Ignition coil defective Flywheel Magneto too weak	Replace the ignition coil or the flywheel
Weak spark	Compression	Too much fuel in the combustion chamber, poor fuel or water in tank	Remove spark plug and dry, replace fuel.
	Carburetor pumps no fuel more.	Blocked fuel line	Clean the carburetor and clean the lines
Normal fuel supply but weak compression		Worn piston rings, spark plug not tightened, the cylinder head is not tightly wrong valve clearance or ignition	Replace or adjust
Normal fuel supply and good spark		Poor contact between spark plug cap and spark plug	Check or exchange

9.2 Difficulties during operation.

Situation	Cause	Solution
Motor does not come up to speed	Choke is in "cold start" position, exhaust system does not clog air supply, worn Movable elements, spark weak to large valve clearance, Sooty cylinder head	Open choke, exhaust system ignition coil exchange check or replace, flywheel Adjust spark plug
Power run out	Congested lines to the carburetor Spark-distance wrong	Replace lines and carburetor set gap
Engine sounds	Incorrect choke position, damaged crankshaft	Check/Replace crankshaft
Leaking carburetor	Failure of the non-return valve on the tank lid	Replace the fuel cap
	Worn carburetor gasket	Replace the carburetor or seal

10. DISPOSAL OF MACHINE

10.1. Should it become necessary to dispose of your machine please contact your local Council for the disposal advise of the device, or take unit to your local recycling center. Make sure all oil and fuel is correctly disposed of either beforehand or at amenity center.

11. DECLARATION OF CONFORMITY

2006/42/EC Machinery Directive
2004/108/EC EMC Directive
2000/14/EC Noise Emissions Directive
97/68/EC NRMM Emissions Directive

EC DECLARATION OF CONFORMITY

The undersigned, as authorised by: **Genpower Ltd**

Declares that the following equipment manufactured under licence by Hyundai Korea

Conforms to the Directive: -
2000/14/EC, Amended by 2005/88/EC (as amended)

of the European Parliament and of the council on the approximation of the laws of the Member States relating to the noise emission in the environment by equipment for use outdoors.

Equipment Category: **Garden Machinery**

Product Name/Model: **HYBC5080AV**

Type/Serial No: **Brush-cutter/Grass trimmer**

Power: **1.56 kW**
Cutting Width: **Blade 255mm, Trimmer cord 440 mm**

The technical documentation is kept by: **Kevin Stanley, Genpower Ltd,
Isaac Way, Pembroke Dock,
Pembrokeshire, SA72 4RW.**

The conformity assessment procedure followed was in accordance with annex V of the Directive.

Notified Body: **TÜV Rheinland LGA Products GmbH,
Tilleystraße 2
D-90431,
NÜMBERG**

Certificate Number **S50302389**

Measured Sound Power Level: **114dB(A)**


Guaranteed Sound Power Level: **117dB(A)**

A copy of this certificate has been submitted to the European Commission and to EU Member State United Kingdom.

Place of Declaration: **Pembroke Dock, SA72 4RW**

Date: **9th November 2015**

Signed by: **Kevin Stanley**
Position in Company: **Product Manager**
Name and address of manufacturer or Authorised representative:

 **Genpower Ltd,
Isaac Way, Pembroke Dock,
Pembrokeshire, SA72 4RW.**

12. GENPOWER CONTACT DETAILS

Postal address; Genpower Limited, Isaac Way, Pembroke Dock,
Pembrokeshire, SA72 4RW, UK.

Telephone contact number; Office ; +44 (0) 1646 687880

Email contact; Technical; service@genpower.co.uk

Web site; www.hyundaipowerequipment.co.uk

HYUNDAI

GENPOWER LTD

Isaac Way, London Road
Pembroke Dock, UNITED KINGDOM, SA72 4RW
T: +44 (0) 1646 687 880 F: +44 (0) 1646 686 198

E: info@hyundaipowerequipment.co.uk

www.hyundaipowerequipment.co.uk